



OzFlow[®]

**STAINLESS STEEL INDUSTRIAL
FLOOR DRAINS & CHANNELS**

OzFlow Stainless Steel Floor Drains & Channels

Introduction

- OzFlow
- German manufacturing partner - Wiedemann Technik
- Products
 - Floor Drains
 - Grated Channels
 - Slot Channels
 - Design & Installation Info



Quality

Made in Germany exclusively by Wiedemann Technik with more than 70 years of perfecting stainless steel drainage solutions



Responsive

Local stock of standard floor drains and accessories and fast turnaround for custom channels



Support

WaterMark approved products, international design and technical experience with local support

OzFlow Stainless Steel Floor Drains & Channels

OzFlow and Wiedemann Technik

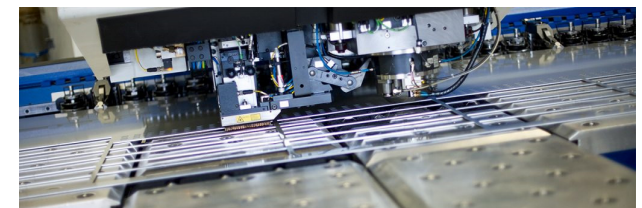
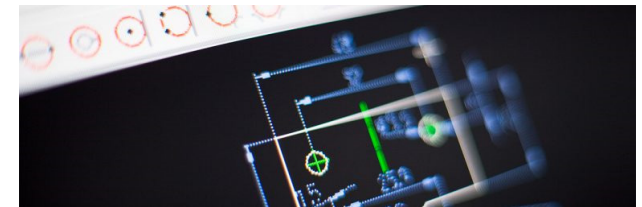
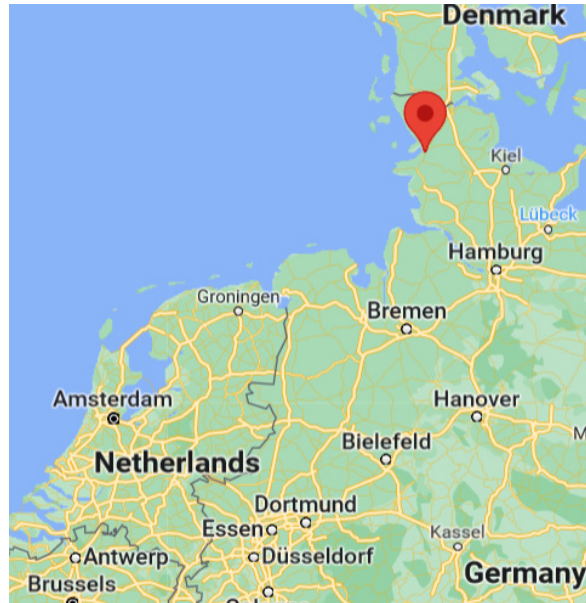
- OzFlow brings more than 30 years of experience in successfully delivering innovative product solutions to the market with a focus on water (Humes, BlueScope, MM Kembla)
- OzFlow's stainless steel drainage products are manufactured from 316Ti as standard - equal to 316L for corrosion resistance and 10% stronger than 316L
- Our products have WaterMark certification as well as Sydney Water and SA Water approvals
- Wiedemann Technik are the largest stainless steel drainage manufacturer in Germany and have been in business for more than 70 years.



OzFlow Stainless Steel Floor Drains & Channels



- ISO 9001 certification
- 9,500 m2 factory
- 200+ employees
- Member of European Hygienic Engineering & Design Group (EHEDG)
- Products are manufactured at their plant in Husum, Germany, about 150km northwest of Hamburg



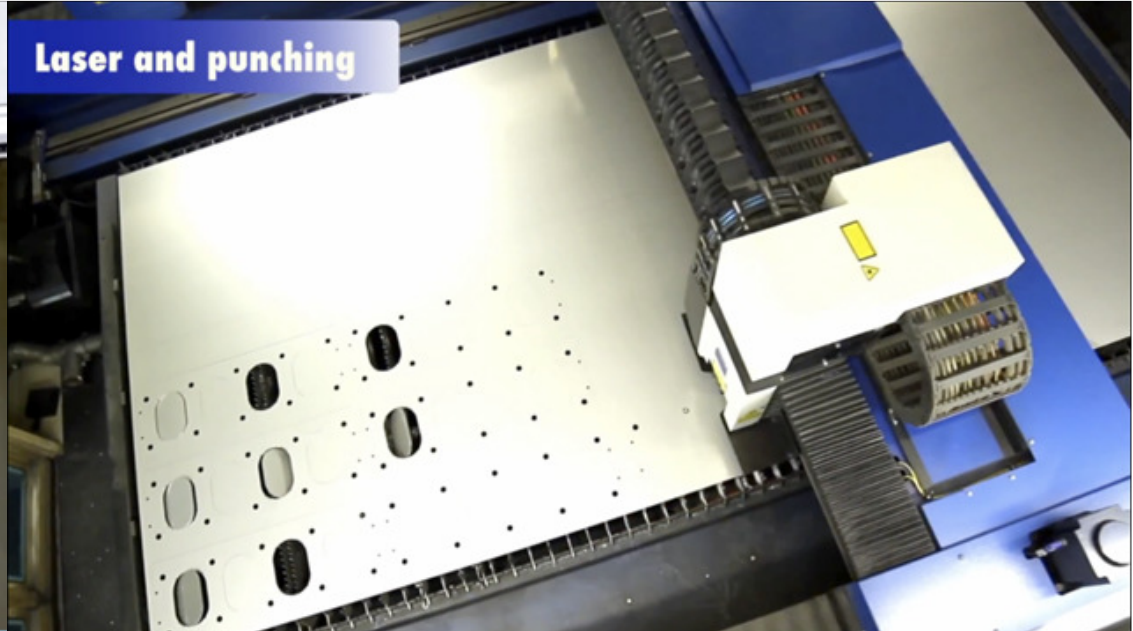
Virtual Factory Tour



CNC-Programming



Laser and punching

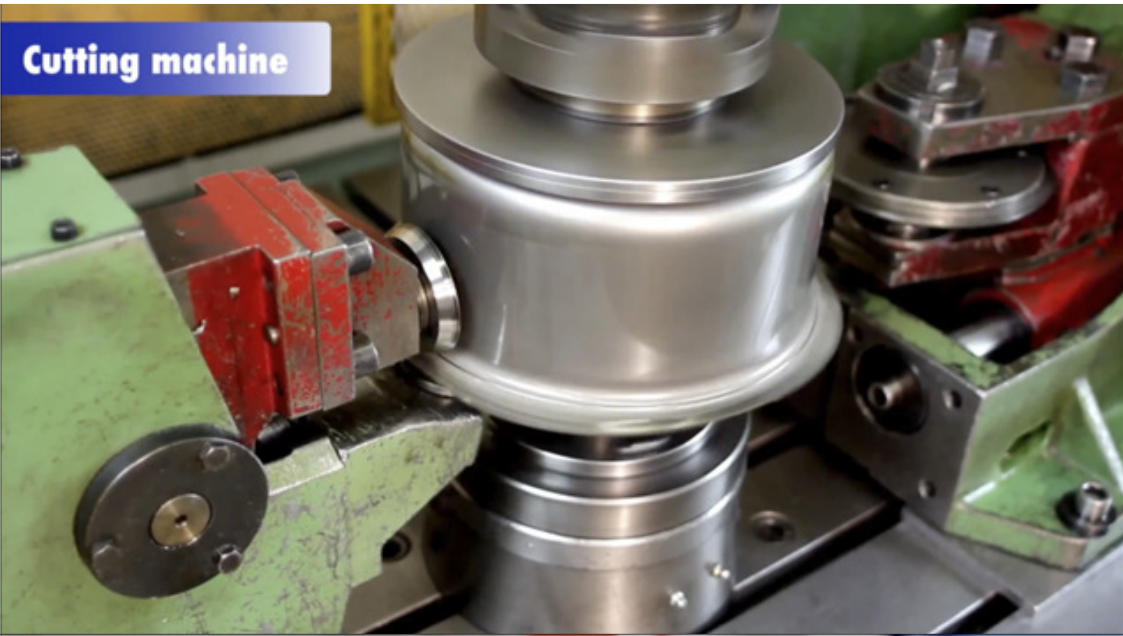


Bending machine



Deep-drawing press





Cutting machine



Roll bending machine



Roll bending machine

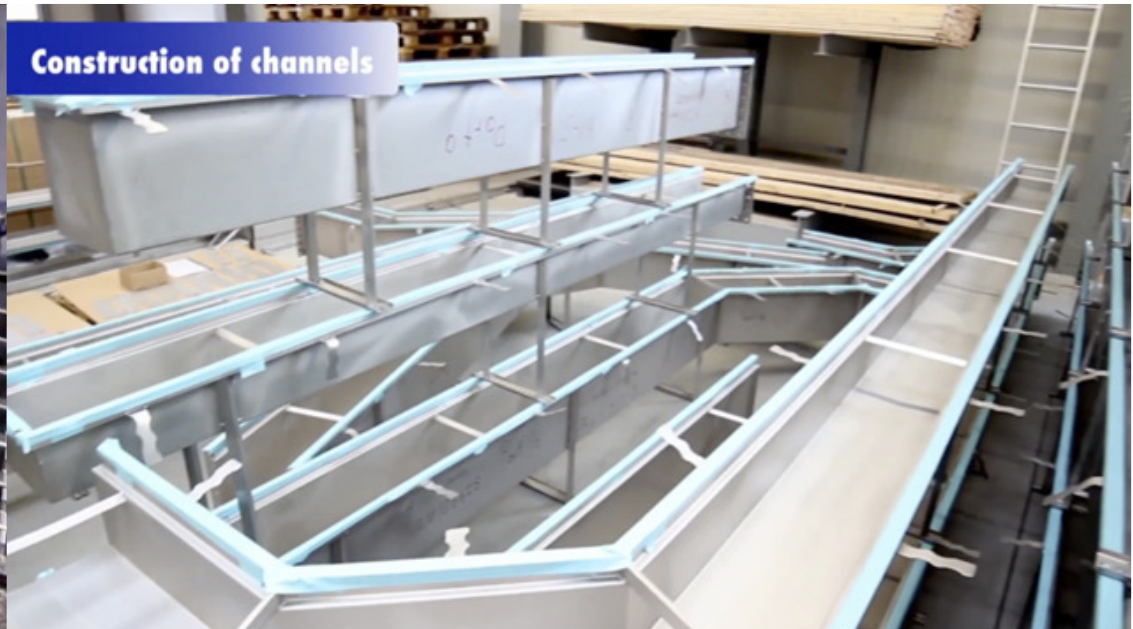


Circular welding machine

Manual welding



Construction of channels



Grain-blasting



Quality assurance



OzFlow Stainless Steel Floor Drains & Channels

Standard Floor Drains

Solid Stainless Steel Rims for Round and Square Designs

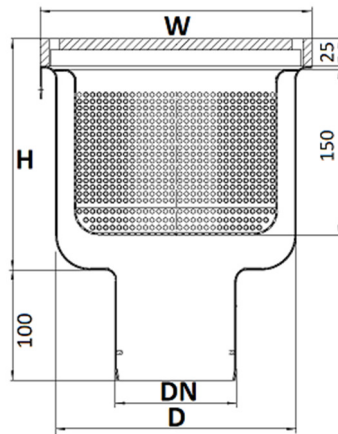
- No epoxy filling
- Maximum strength and hygiene
- Sharp edge transition = effective floor seal and improves hygiene
- Square top drains have smooth radius corners to improve hygiene and reduce floor crack initiation



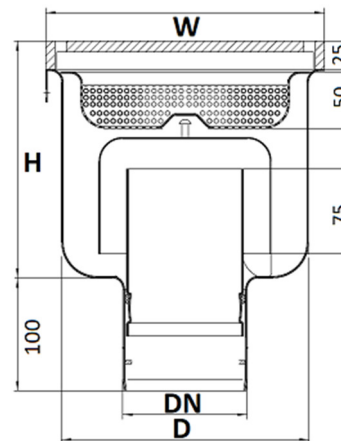
OzFlow Stainless Steel Floor Drains & Channels

Big, deep drawn, smooth sided drain bowls

- 218 mm bowl (110mm outlet standard)
- 283 mm bowl (160mm outlet standard)
- Designed to be flow matched to outlets with accessories, grating, basket and plug-in trap used
- The design and sizing offers optimal hydraulic performance and lower maintenance
- Smooth sides and radius transitions ensures maximum hygiene and efficiency



Deep Basket – No Trap

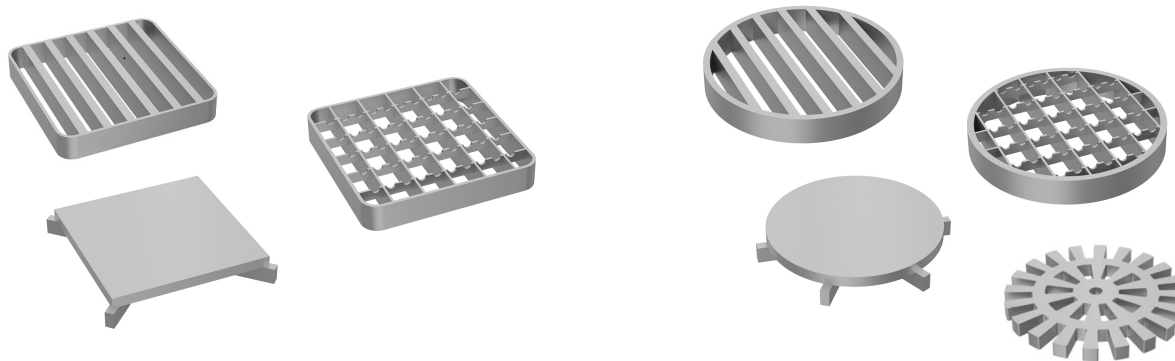


Shallow Basket with Plug-In Trap

OzFlow Stainless Steel Floor Drains & Channels

Wide range of hygienic accessories

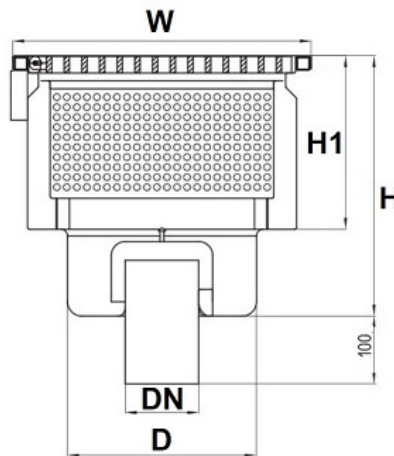
- All components have 316Ti stainless construction - grates, baskets, traps and strainers
- Plug-in traps- removable, easy to clean, hydraulically efficient design
 - WaterMark approved with 75mm depth (50mm in Europe)
 - Reduced installation costs, no P-trap required, less connections, assists with low fall sites
 - Lowers operational costs, improves accessibility and simplifies system maintenance
 - In Europe and the UK P-Traps are rarely used in industrial floor drain applications
- Big baskets = less maintenance/operational costs
- Outlet strainers - factory manufactured provision in all standard floor drains
- 10, 6, 4 and 2 mm perforation options for baskets and strainers to meet regional requirements
- Wide range of strong, durable and hygienic grating, incl. EHEDG bar grating and billet laser cut grating. We don't offer cast grates as they're manufactured from 304 grade stainless



OzFlow Stainless Steel Floor Drains & Channels

Large Floor Drains

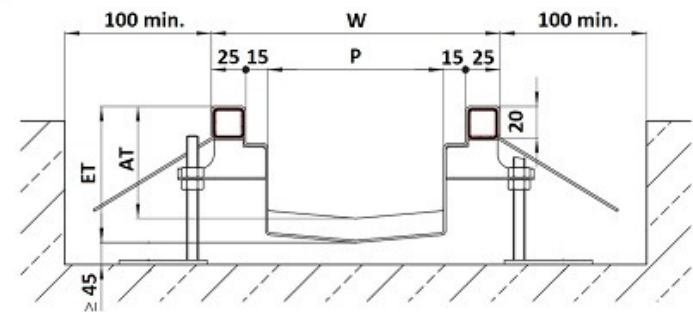
- 447mm square (160mm outlet standard)
- 647mm square (200mm outlet standard)
- Surround is reinforced with fully welded stainless steel section, no epoxy filling
- Heavy duty hinged stainless steel bar cover with “hold-in-up position” feature
- Grate recess is hygienically formed with the side walls
- WaterMark certified plug-in traps, large capacity baskets and outlet strainers



OzFlow Stainless Steel Floor Drains & Channels

V-Profile Channels

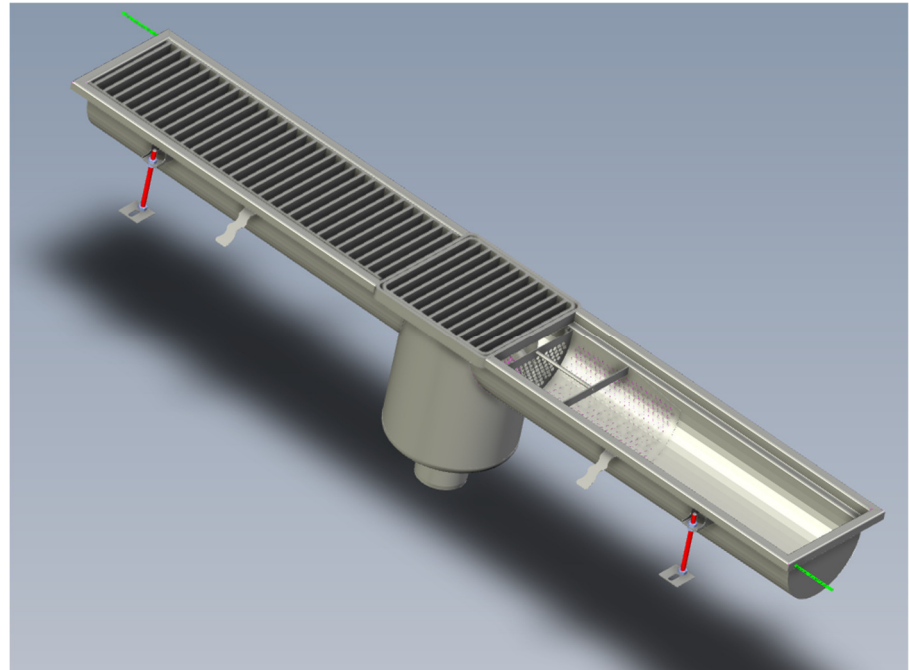
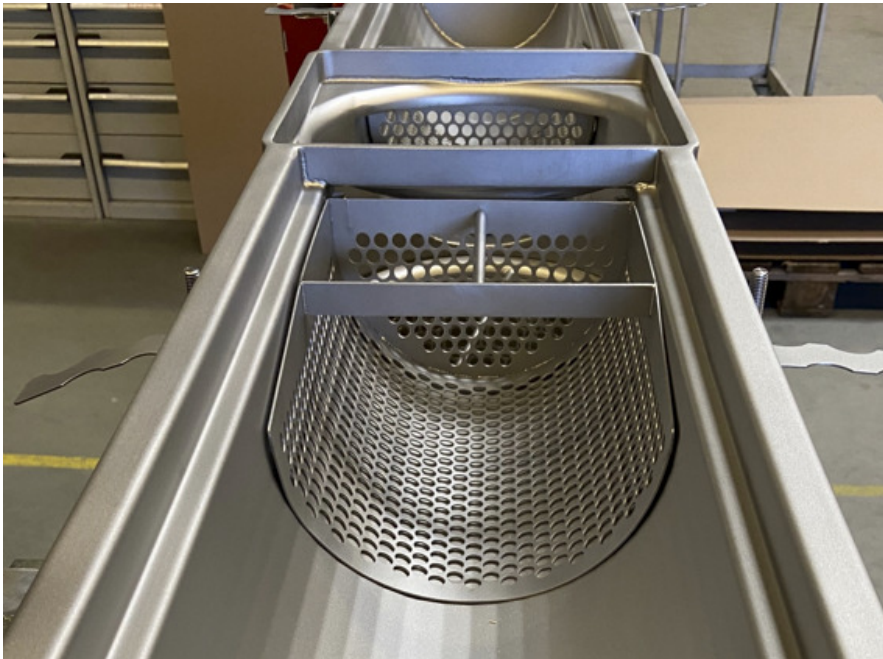
- Stainless steel reinforced channel edges as standard
- No epoxy edge filling
- Improved strength, more hygienic and resists thermal movement
- Fall 0.6% for all channels
- 150mm up to 500mm standard widths
- Wide range of cover/grate options
- Anchor tags every 500mm
- Adjustable levelling feet every 1000mm
- Easy weld-free installation, flanged bolted connections
- Custom made for each project with short lead times



OzFlow Stainless Steel Floor Drains & Channels

Half Round Channels

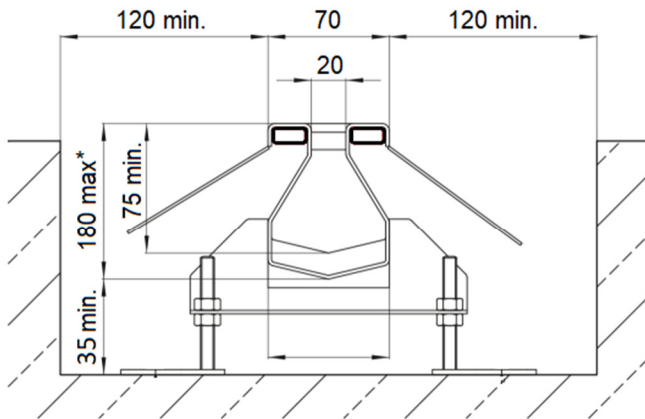
- Greater capacity and enhance hydraulic performance
- Suitable for applications with bulky, lightweight solids e.g., feathers
- 300mm half-round channel with optional in-line scoop filters shown below
- SolidWorks 3D model developed for client presentation



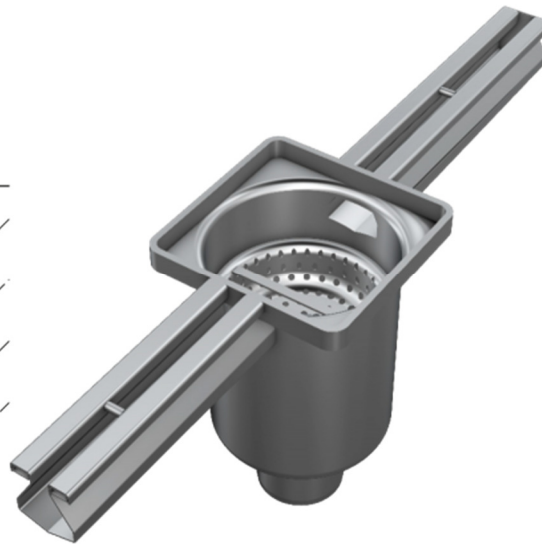
OzFlow Stainless Steel Floor Drains & Channels

Slot Channel

- Stainless steel reinforced channel edges as standard, no epoxy
- Grate-free = lower upfront and maintenance costs and reduced safety issues compared to grated channels
- 20mm slot opening and 70mm width hydraulic capacity
- Distance holders every 300mm



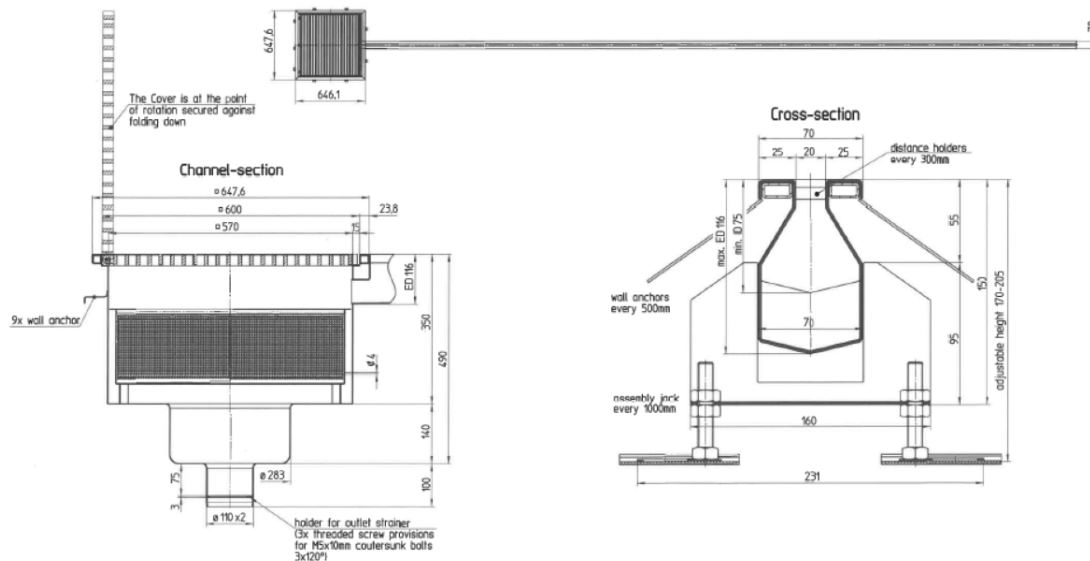
* Non-standard products available, please contact OzFlow



OzFlow Stainless Steel Floor Drains & Channels

Case Study - Wyong NSW

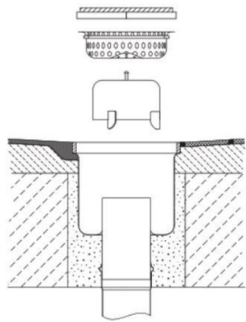
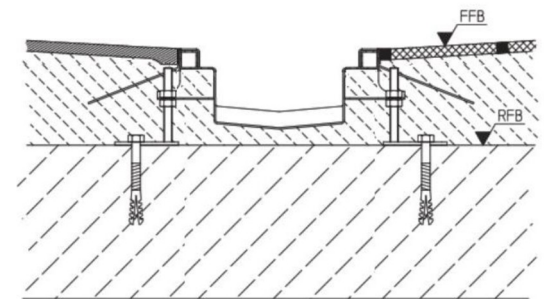
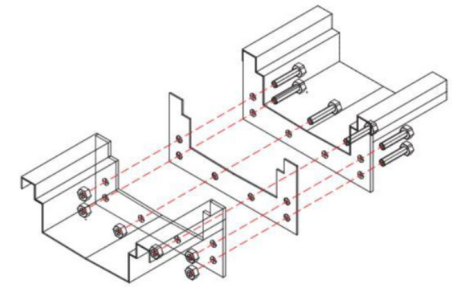
- New factory for the producer of the world's leading coffee liqueur
- Options of floor drains only, or standard grated channels, or slot channels offered
- Client selected slot channel option based on hydraulics, waste loading, cost, safety and maintenance
- Standard floor drains used in warehouse/loading area
- 647mm large floor drain incorporated into slot channel for coffee grounds capture (50L capacity basket)



OzFlow Stainless Steel Floor Drains & Channels

Design & Installation Information

- Channels are generally manufactured in sections of up to 4 - 6 metres in length for transportation to, and handling on site
- Channels are recommended to be no longer than 10 metres in length per outlet
- Fall of 0.6% is recommended for all channels
- Rubber feet are provided for installation on waterproof membrane (weighted method), otherwise levelling feet are bolted to the concrete floor
- Allow clearances for anchor tabs, levelling feet and connection flanges in the floor provision
- Connection flanges extend approximately 45 mm below the drain invert
- All channel components are individually marked to allow for easy installation



OzFlow Stainless Steel Floor Drains & Channels

Summary

- OzFlow offers innovative and cost-effective stainless steel drainage solutions
- The products are STRONG, EFFICIENT and HYGIENIC
- 100% made in Germany and all components are 316Ti stainless - QUALITY
- Australian Approvals - WaterMark, Sydney Water, SA Water
- Experienced local and international support